

River House

Specialist service for people with a learning disability and autism in Shaw's Bridge, Belfast.



Introducing River House

River House is a specialist service for people aged 18 years and over with a learning disability, who may also present behaviours that challenge.

Located in the Shaw's Bridge area of Greater Belfast, River House is within walking distance of local shops and parks, as well as major bus routes into Belfast city centre, which is only five miles from the service.

This robust and specifically designed house brings together the best qualities of a local service with the support and expertise of a

well-established provider. The staff team have significant expertise in caring for people with autism.

River House has an experienced and trained staff team that is managed by a dedicated full time Manager and their Deputy Managers. The service also benefits from a dedicated Positive Behaviour Support Lead, as well as support from our regional Behaviour Support Specialist at Priory Adult Care.

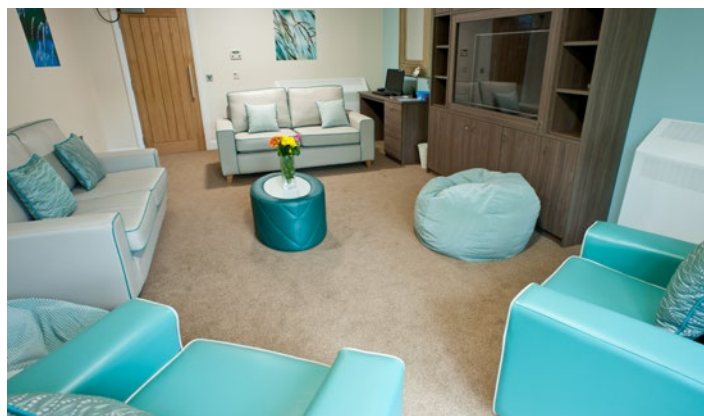
Living at River House

The upper ground floor consists of three large, individually decorated bedrooms that all have en-suite wet rooms, a modern living room and separate dining room. There is also a modern fitted kitchen, as well as a garden on the upper ground level which is fully secure and accessible to services users.

The lower ground floor is made up of three large bedrooms with an integrated lounge and a separate wet room. These rooms have been designed with skills development in mind and include an Activities of Daily Living (ADL) kitchen designed to promote independence, whilst maintaining safety.

A new extension has recently been built to create two new large en-suite bedrooms, both rooms consist of a separate we room and integrated lounge.

The lower ground bedrooms also have a separate secure garden with access to the shared gardens to the rear. All the furniture and fittings have been designed with the residents in mind, and are both homely and robust.



Admissions and referrals

At Priory Adult Care, we can offer advice about accessing benefits and funding if appropriate.

We support people on how best to spend an individual budget or direct payment to make sure the people we support can live the life they want.

Referrals can be made through:

- The individual's social services department management team or, if relevant, their local health authority
- By the individual (or an appropriate adult acting on their behalf) who wishes to use direct payment, individual budget, or who is self-financing.

Our services

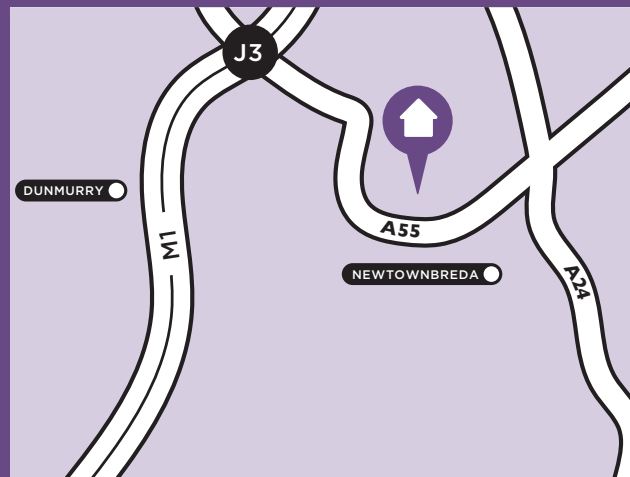
Amongst the services available are:

- Eight en-suite bedrooms
- A spacious garden, comfortable and homely communal lounge, modern kitchen and dining area
- Person-centred support programmes in a safe and caring environment
- Intensive and interactive communication programmes
- Positive Behaviour Support (PBS) Practitioner
- Education and voluntary/paid employment opportunities
- Progression through a care pathway to fulfil each individual's potential to live more independently
- Interaction within Priory Adult Care's communication strategy 'Your Voice'

Achieving positive outcomes

By encouraging people to take control and have belief in their potential, we can make positive outcomes a reality for everyone, regardless of age or presumed ability.

We create pathways that support individuals through residential to community living, delivering measurable results for both local authorities and the people who use our services. This, paired with our personalisation agenda, enables us to help the people we support to lead fulfilled, independent lives. By working together, we can make a real and lasting difference.



Contact us

To make a referral or for enquiries and further information about River House:

Call us on

0808 231 9425

Send an email to

adultcare@priorygroup.com

Visit our website at

www.prioryadultcare.co.uk

River House, 114 Miltown Road, Belfast, BT8 7XP